

Improving person to desk ratio

Perfumery & Fragrance | Europe



GOAL

Maximise the use of existing space and grow headcount by 20%.

Highlights



226 sensors

Desk and meeting room sensors



2 days

Short deployment turnaround



Bespoke reports

Including optimisation recommendations



Network

LoRaWAN operated working outside the customer's IT infrastructure

Delivering data powered workplace transformation solutions



www.opensensors.com

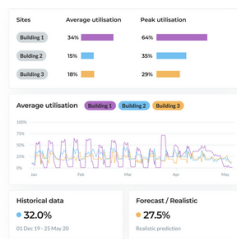


hello@opensensors.com

CHALLENGES

- No occupancy data on new office layout where there is no assigned seating arrangement
- Pressure to grow headcount by 20% in existing office
- Pressure to find ways to use existing office space efficiently
- Observation data depict underutilised spaces with low occupancy

SOLUTION



Occupancy & utilisation analytics software

Providing accurate data on how employees utilise and interact with spaces, allowing Facilities teams to re-configure underused spaces to optimise utilisation.

BENEFITS

1

"I can check occupancy of every desk and meeting room by floor, by community, by day and by time. The data is represented in a way that is easy to understand".

2

Increased desk ratio to 1.2:1

Improved desk ratio from 1:1 to 1.2:1 and grow headcount by 20%.

3

Direct savings in cost per square metre

Increased efficiency in space management approach with direct impact on cost savings.

"I now have the information I need to make important decisions, such as whether to hire more staff, extend our offices to another floor or rent more space".

Senior Facilities Manager